



NOW HIRING: Maintenance Crew Lead

ABOUT YOU:

EXPERIENCED, certified (MNLA) gardening/landscape professional with pesticide and DOT licensure looking to join a motivated team with **LOYAL CLIENT BASE** and **OPPORTUNITIES FOR GROWTH**. Natural leader who is confident delegating responsibilities and sharing expertise.

ABOUT THIS POSITION:

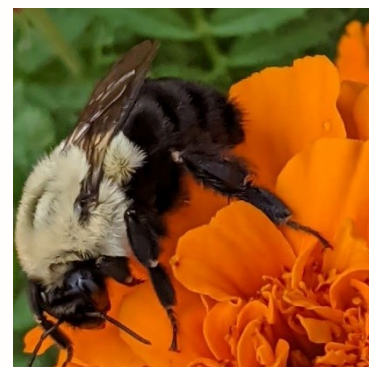
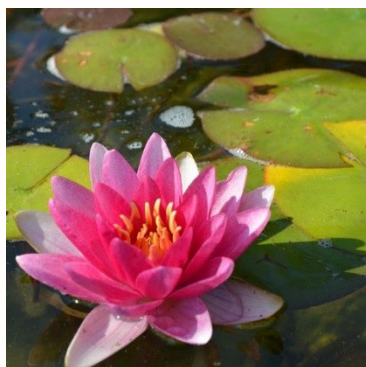
This is a seasonal supervisory role for the full-time leadership of a garden maintenance crew. Primary duties are to lead and inspire a dynamic gardening team that maintains both private residential and commercial gardens and landscapes. Responsibilities are 75% maintenance based and 25% managerial. Shares in our collective vision to create functional landscapes, edible gardens, pollinator-friendly habitats and embraces sustainable gardening practices.

BENEFITS:

- Workshops & training in horticulture & organizational development
- Annual education allowance
- Paid holidays & vacation; personal days upon request
- IRA & production bonuses, based on eligibility
- Company provided uniforms & surplus plant stock when available

ABOUT US:

Heidi's Lifestyle Gardens has been beautifying gardens, homes and landscapes since 1979. We are a family business that cultivates an energetic and detail-oriented team of garden professionals that love what they do. Our core values include a passion for horticulture, ambition, dedication, teamwork, caring, positivity and flexibility. As environmental stewards, we strive to be on the forefront of the green industry by providing sustainable services and aligning with like-minded groups and individuals. We continuously adapt our practices in order to create beautiful and unique greenscapes while being mindful of our ecological impact and strategic future growth.



For more information or details please email info@BloomOnMN.com or call 763-475-4960

✂ Enhance Your Life ✂ Inspire Your Spirit ✂